



## 测试报告

No. CANML1809776902

日期: 2018年08月06日 第1页,共8页

深圳市恒河新材料有限公司

广东省深圳市宝安区观澜街道四和社区宝昌路富民购物广场五楼 536 号

以下测试之样品是由申请者所提供及确认: 颜料

SGS工作编号: SZML180652277 - SZ  
测试样品信息: H-300  
客户参考信息: 见备注  
样品接收日期: 2018年08月01日  
测试周期: 2018年08月01日 - 2018年08月06日  
测试要求: 根据客户要求测试  
测试方法: 请参见下一页  
测试结果: 请参见下一页

通标标准技术服务有限公司

授权签名

杨谷毅

Echo Yeung 杨谷毅

批准签署人

备注: 根据客户申请, SGS出具了此中文报告, 英文版本可根据客户要求提供. (The Chinese test report is issued according to the applicant's request. The English version is available from SGS if further needed)



This document is issued by the Company subject to its General Conditions of Service printed overleaf, available on request or accessible at <http://www.sgs.com/en/Terms-and-Conditions.aspx> and, for electronic format documents, subject to Terms and Conditions for Electronic Documents at <http://www.sgs.com/en/Terms-and-Conditions/Terms-e-Document.aspx>. Attention is drawn to the limitation of liability, indemnification and jurisdiction issues defined therein. Any holder of this document is advised that information contained hereon reflects the Company's findings at the time of its intervention only and within the limits of Client's instructions, if any. The Company's sole responsibility is to its Client and this document does not exonerate parties to a transaction from exercising all their rights and obligations under the transaction documents. This document cannot be reproduced except in full, without prior written approval of the Company. Any unauthorized alteration, forgery or falsification of the content or appearance of this document is unlawful and offenders may be prosecuted to the fullest extent of the law. Unless otherwise stated the results shown in this test report refer only to the sample(s) tested.

Attention: To check the authenticity of testing / inspection report & certificate, please contact us at telephone: (86-755) 8307 1443, or email: CN.Doccheck@sgs.com

SGS-CTD Standards Technical Services Co., Ltd.  
Guangzhou Standards Technical Laboratory

198 Kezhu Road, Sciartech Park Guangzhou Economic & Technology Development District, Guangzhou, China 510663 t (86-20) 82155555 f (86-20) 82075113 www.sgsgroup.com.cn  
中国·广州·经济技术开发区科学城科珠路198号 邮编: 510663 t (86-20) 82155555 f (86-20) 82075113 e sgs.china@sgs.com

## 测试报告

No. CANML1809776902

日期: 2018年08月06日 第2页,共8页

测试结果:

### 测试样品描述:

样品编号	SGS样品ID	描述
SN1	CAN18-097769.001	黑色粉末

备注:

- (1) 1 mg/kg = 1 ppm = 0.0001%
- (2) MDL = 检测极限值
- (3) ND = 未检出 (< MDL)
- (4) "-" = 未规定

### EN 71 Part 3:1994 + A1:2000+ AC:2002 可溶性重金属含量

测试方法: 参照EN 71 Part 3:1994 + A1:2000 + AC: 2002 测定, 采用ICP-OES进行分析.

测试项目	限值	单位	MDL	001
可溶性铅 (Pb)	90	mg/kg	5	ND
可溶性锑 (Sb)	60	mg/kg	5	ND
可溶性砷 (As)	25	mg/kg	2.5	ND
可溶性钡 (Ba)	1,000	mg/kg	10	ND
可溶性镉 (Cd)	75	mg/kg	5	ND
可溶性铬 (Cr)	60	mg/kg	5	ND
可溶性汞 (Hg)	60	mg/kg	5	ND
可溶性硒 (Se)	500	mg/kg	10	ND

备注:

- (1) 结果经分析调整.

### 卤素

测试方法: 参照EN 14582:2007方法测定, 采用IC进行分析.

测试项目	单位	MDL	001
氟 (F)	mg/kg	50	ND
氯 (Cl)	mg/kg	50	ND
溴 (Br)	mg/kg	50	ND
碘 (I)	mg/kg	50	ND



This document is issued by the Company subject to its General Conditions of Service printed overleaf, available on request or accessible at <http://www.sgs.com/en/Terms-and-Conditions.aspx> and, for electronic format documents, subject to Terms and Conditions for Electronic Documents at <http://www.sgs.com/en/Terms-and-Conditions/Terms-e-Documents.aspx>. Attention is drawn to the limitation of liability, indemnification and jurisdiction issues defined therein. Any holder of this document is advised that information contained hereon reflects the Company's findings at the time of its intervention only and within the limits of Client's instructions, if any. The Company's sole responsibility is to its Client and this document does not exonerate parties to a transaction from exercising all their rights and obligations under the transaction documents. This document cannot be reproduced except in full, without prior written approval of the Company. Any unauthorized alteration, forgery or falsification of the content or appearance of this document is unlawful and offenders may be prosecuted to the fullest extent of the law. Unless otherwise stated the results shown in this test report refer only to the sample(s) tested.

Attention: To check the authenticity of testing/inspection report & certificate, please contact us at telephone: (86-755) 8307 1443, or email: CN.Doccheck@sgs.com

SGS-TESTING SERVICE  
Guangzhou Economic & Technology Development District  
Guangzhou Economic & Technology Development District

198 Kezhu Road, Science Park Guangzhou Economic & Technology Development District, Guangzhou, China 510663 t (86-20) 82155555 f (86-20) 82075113 www.sgsgroup.com.cn  
中国·广州·经济技术开发区科学城科珠路198号 邮编: 510663 t (86-20) 82155555 f (86-20) 82075113 e sgs.china@sgs.com

**多环芳香烃(PAHs)**

测试方法: 参照ZEK 01.4-08及其后续指令, 采用 GC-MS进行分析.

测试项目	单位	MDL	001
萘 (NAP)	mg/kg	0.1	3.1
蒽(ANY)	mg/kg	0.1	2.1
芘(萘嵌戊烷) (ANA)	mg/kg	0.1	ND
芴 (FLU)	mg/kg	0.1	ND
菲 (PHE)	mg/kg	0.1	0.5
蒽 (ANT)	mg/kg	0.1	ND
荧蒽 (FLT)	mg/kg	0.1	0.4
芘 (PYR)	mg/kg	0.1	3.1
苯并(a)蒽 (BaA)	mg/kg	0.1	ND
屈 (CHR)	mg/kg	0.1	ND
苯并(b)荧蒽 (BbF)和苯并(j)荧蒽 (BjF)	mg/kg	0.1	ND
苯并(k)荧蒽 (BkF)	mg/kg	0.1	ND
苯并(a)芘 (BaP)	mg/kg	0.1	0.1
苯并(e)芘 (BeP)	mg/kg	0.1	0.1
茚苯(1,2,3-c,d)芘 (IPY)	mg/kg	0.1	ND
二苯并(a,h)蒽(DBA)	mg/kg	0.1	ND
苯并(g,h,i)芘(二萘嵌苯) (BPE)	mg/kg	0.1	0.1
18项多环芳香烃总和	mg/kg	-	9.5



This document is issued by the Company subject to its General Conditions of Service printed overleaf, available on request or accessible at <http://www.sgs.com/en/Terms-and-Conditions.aspx> and, for electronic format documents, subject to Terms and Conditions for Electronic Documents at <http://www.sgs.com/en/Terms-and-Conditions/Terms-e-Document.aspx>. Attention is drawn to the limitation of liability, indemnification and jurisdiction issues defined therein. Any holder of this document is advised that information contained hereon reflects the Company's findings at the time of its intervention only and within the limits of Client's instructions, if any. The Company's sole responsibility is to its Client and this document does not exonerate parties to a transaction from exercising all their rights and obligations under the transaction documents. This document cannot be reproduced except in full, without prior written approval of the Company. Any unauthorized alteration, forgery or falsification of the content or appearance of this document is unlawful and offenders may be prosecuted to the fullest extent of the law. Unless otherwise stated the results shown in this test report refer only to the sample(s) tested.

Attention: To check the authenticity of testing/inspection report & certificate, please contact us at telephone: (86-755) 8307 1443, or email: [CN.Doccheck@sgs.com](mailto:CN.Doccheck@sgs.com)

SGS-TEST Standards Technical Services Co., Ltd  
Guangzhou Economic & Technology Development District, Guangzhou, China

198 Kezhu Road, Sciotech Park Guangzhou Economic & Technology Development District, Guangzhou, China 510663 t (86-20) 82155555 f (86-20) 82075113 www.sgs.com.cn  
中国·广州·经济技术开发区科学城科珠路198号 邮编: 510663 t (86-20) 82155555 f (86-20) 82075113 e [sgs.china@sgs.com](mailto:sgs.china@sgs.com)

ZEK 01 4-08 产品最大控制值

参数	1类	2类	3类
	设计意图为放入口中的材料,以及36个月以下幼儿的玩具上与皮肤接触的材料	未在1类规定中涵盖的材料,且可能与皮肤长期接触的材料(接触时间大于30秒)	未在1和2类规定中涵盖的材料,且可能与皮肤短期接触的材料(接触时间小于等于30秒)
BaP含量 (mg/kg)	< 0.2**	1	20
18种 PAH 总量 (mg/kg)*	< 0.2**	10	200

备注:

\* =仅物质浓度大于 0.2ppm 时才用于计算 18 项 PAHs 总量

\*\*=若设计意图为放入口中的材料的测试结果大于 1 类限值但不超过 2 类限值,需再依据 DIN EN 1186ff 及§64 LFGB 80.30-1 进行 PAH 的迁移性测试并根据相关食品法规进行判定。



This document is issued by the Company subject to its General Conditions of Service printed overleaf, available on request or accessible at <http://www.sgs.com/en/Terms-and-Conditions.aspx> and, for electronic format documents, subject to Terms and Conditions for Electronic Documents at <http://www.sgs.com/en/Terms-and-Conditions/Terms-e-Document.aspx>. Attention is drawn to the limitation of liability, indemnification and jurisdiction issues defined therein. Any holder of this document is advised that information contained hereon reflects the Company's findings at the time of its intervention only and within the limits of Client's instructions, if any. The Company's sole responsibility is to its Client and this document does not exonerate parties to a transaction from exercising all their rights and obligations under the transaction documents. This document cannot be reproduced except in full, without prior written approval of the Company. Any unauthorized alteration, forgery or falsification of the content or appearance of this document is unlawful and offenders may be prosecuted to the fullest extent of the law. Unless otherwise stated the results shown in this test report refer only to the sample(s) tested.

Attention: To check the authenticity of testing / inspection report & certificate, please contact us at telephone: (86-755) 8307 1443, or email: CN.Doccheck@sgs.com

SGS-CTI Standards Technical Services Co., Ltd  
Guangzhou Standards Technical Services Laboratory

198 Kezhu Road, Solentech Park Guangzhou Economic & Technology Development District, Guangzhou, China 510663 t (86-20) 82155555 f (86-20) 82075113 www.sgs.com.cn  
中国·广州·经济技术开发区科学城科珠路198号 邮编: 510663 t (86-20) 82155555 f (86-20) 82075113 e sgs.china@sgs.com





测试报告

No. CANML1809776902

日期: 2018年08月06日 第5页,共8页

备注:



This document is issued by the Company subject to its General Conditions of Service printed overleaf, available on request or accessible at <http://www.sgs.com/en/Terms-and-Conditions.aspx> and, for electronic format documents, subject to Terms and Conditions for Electronic Documents at <http://www.sgs.com/en/Terms-and-Conditions/Terms-e-Document.aspx>. Attention is drawn to the limitation of liability, indemnification and jurisdiction issues defined therein. Any holder of this document is advised that information contained hereon reflects the Company's findings at the time of its intervention only and within the limits of Client's instructions, if any. The Company's sole responsibility is to its Client and this document does not exonerate parties to a transaction from exercising all their rights and obligations under the transaction documents. This document cannot be reproduced except in full, without prior written approval of the Company. Any unauthorized alteration, forgery or falsification of the content or appearance of this document is unlawful and offenders may be prosecuted to the fullest extent of the law. Unless otherwise stated the results shown in this test report refer only to the sample(s) tested.

Attention: To check the authenticity of testing inspection report & certificate, please contact us at telephone: (86-755)8307 1443, or email: [CN.Doccheck@sgs.com](mailto:CN.Doccheck@sgs.com)

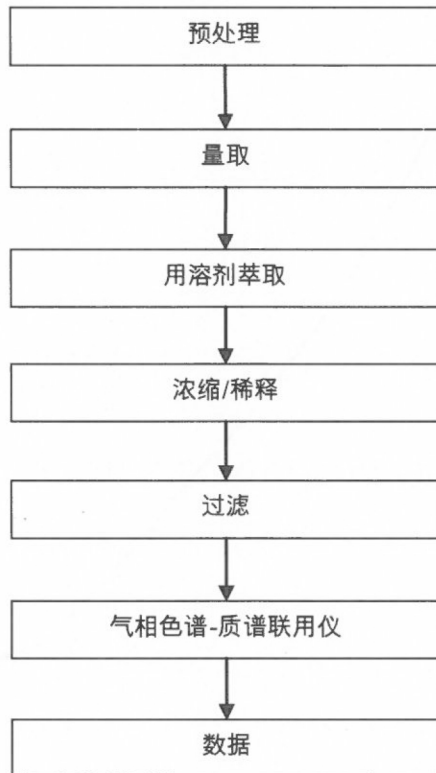
SGS-CTI Standards Technical Services Co., Ltd  
Guangzhou Economic & Technological Development District

198 Kezhu Road, Sciotech Park Guangzhou Economic & Technology Development District, Guangzhou, China 510663 | (86-20) 82155555 | (86-20) 82075113 | [www.sgsgroup.com.cn](http://www.sgsgroup.com.cn)  
中国·广州·经济技术开发区科学城科珠路198号 邮编: 510663 | (86-20) 82155555 | (86-20) 82075113 | [sgs.china@sgs.com](mailto:sgs.china@sgs.com)

附件

### PAHs 测试流程图

- 1) 分析人员: 胡香云
- 2) 项目负责人: 余晓璐



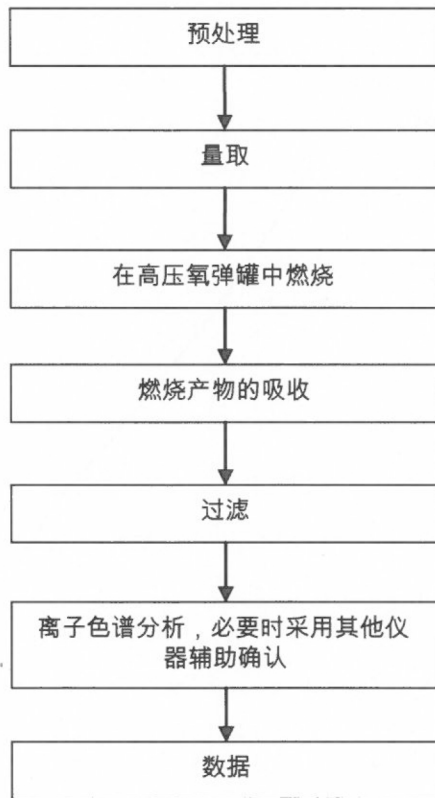
This document is issued by the Company subject to its General Conditions of Service printed overleaf, available on request or accessible at <http://www.sgs.com/en/Terms-and-Conditions.aspx> and, for electronic format documents, subject to Terms and Conditions for Electronic Documents at <http://www.sgs.com/en/Terms-and-Conditions/Terms-e-Document.aspx>. Attention is drawn to the limitation of liability, indemnification and jurisdiction issues defined therein. Any holder of this document is advised that information contained hereon reflects the Company's findings at the time of its intervention only and within the limits of Client's instructions, if any. The Company's sole responsibility is to its Client and this document does not exonerate parties to a transaction from exercising all their rights and obligations under the transaction documents. This document cannot be reproduced except in full, without prior written approval of the Company. Any unauthorized alteration, forgery or falsification of the content or appearance of this document is unlawful and offenders may be prosecuted to the fullest extent of the law. Unless otherwise stated the results shown in this test report refer only to the sample(s) tested.

Attention: To check the authenticity of testing/inspection report & certificate, please contact us at telephone: (86-755) 8307 1443, or email: [CN.Doccheck@sgs.com](mailto:CN.Doccheck@sgs.com)  
198 Kezhu Road, Sciotech Park Guangzhou Economic & Technology Development District, Guangzhou, China 510663 | (86-20) 82155555 | (86-20) 82075113 | [www.sgs.com](http://www.sgs.com)  
中国·广州·经济技术开发区科学城科珠路198号 邮编: 510663 | (86-20) 82155555 | (86-20) 82075113 | [sgs.china@sgs.com](mailto:sgs.china@sgs.com)

附件

### Halogen 测试流程图

- 1) 分析人员: 萧汉明
- 2) 项目负责人: 汪丹



This document is issued by the Company subject to its General Conditions of Service printed overleaf, available on request or accessible at <http://www.sgs.com/en/Terms-and-Conditions.aspx> and, for electronic format documents, subject to Terms and Conditions for Electronic Documents at <http://www.sgs.com/en/Terms-and-Conditions/Terms-e-Document.aspx>. Attention is drawn to the limitation of liability, indemnification and jurisdiction issues defined therein. Any holder of this document is advised that information contained hereon reflects the Company's findings at the time of its intervention only and within the limits of Client's instructions, if any. The Company's sole responsibility is to its Client and this document does not exonerate parties to a transaction from exercising all their rights and obligations under the transaction documents. This document cannot be reproduced except in full, without prior written approval of the Company. Any unauthorized alteration, forgery or falsification of the content or appearance of this document is unlawful and offenders may be prosecuted to the fullest extent of the law. Unless otherwise stated the results shown in this test report refer only to the sample(s) tested.

Attention: To check the authenticity of testing / inspection report & certificate, please contact us at telephone: (86-755) 8307 1443, or email: CN.Doccheck@sgs.com

样品照片:



此照片仅限于随SGS正本报告使用

\*\*\* 报告完 \*\*\*

